

Case Study

JULABO CF30, CF41, FL300

Performance evaluation of JULABO models CF30, CF41, and FL300 with DrySyn COOL reaction systems

Case Study
03-2008
Page 1 from 7



Objective

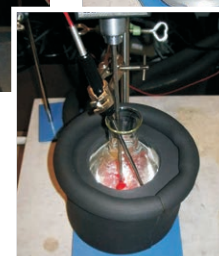
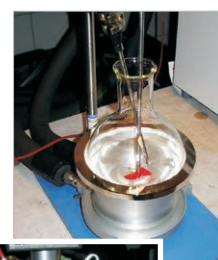
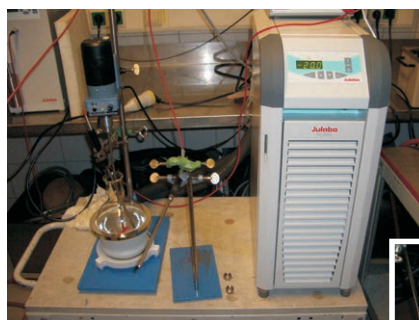
The objective of each test was to evaluate the performance of various JULABO units with ASYNT's DrySyn COOL reaction system.

Test description

The experiment was conducted once each with an insulated and uninsulated DrySyn COOL reaction vessel. The DrySynCOOL module was equipped with a 1000 ml round-bottom flask filled one-third (330 ml) with ethanol. The times required to achieve the temperature control unit's lowest rated temperature inside the unit itself and inside the round-bottom flask were recorded.

Test conditions

Units	CF31 Cryo Compact Circulator CF41 Cryo Compact Circulator FL300 Recirculating Cooler
Mains voltage	230 Volt / 50 Hz
Ambient temperature	20 °C (room temperature)
Medium	Ethanol
Special unit configuration	Temperature control via JULABO EasyTemp



Results

The results show that the tested JULABO models are capable of achieving temperatures below -33 °C inside the 1000 ml flask in DrySyn COOL.

Compilation of actual measurement results

MODEL	INSULATION	LOWEST TEMP: IN MODEL / TIME	LOWEST TEMP: IN ROUND-BOTTOM / TIME
CF31 with DrySyn COOL	insulated	-30 °C / after 2h 20min	-25.2 °C / after 2h 45min
CF31 with DrySyn COOL	not insulated	-21 °C / after 2h 30min	-15.6 °C / after 3h 45min
CF41 with DrySyn COOL	insulated	-40 °C / after 2h 20min	-33.4 °C / after 3h 30min
CF41 with DrySyn COOL	not insulated	-40 °C / after 2h 40min	-27.9 °C / after 4h 00min
FL300 with DrySyn COOL	insulated	-20 °C / after 50min	-16.8 °C / after 1h 45min
FL300 with DrySyn COOL	not insulated	-20 °C / after 1h 10min	-11.3 °C / after 2h 10min

Case Study

JULABO CF30, CF41, FL300

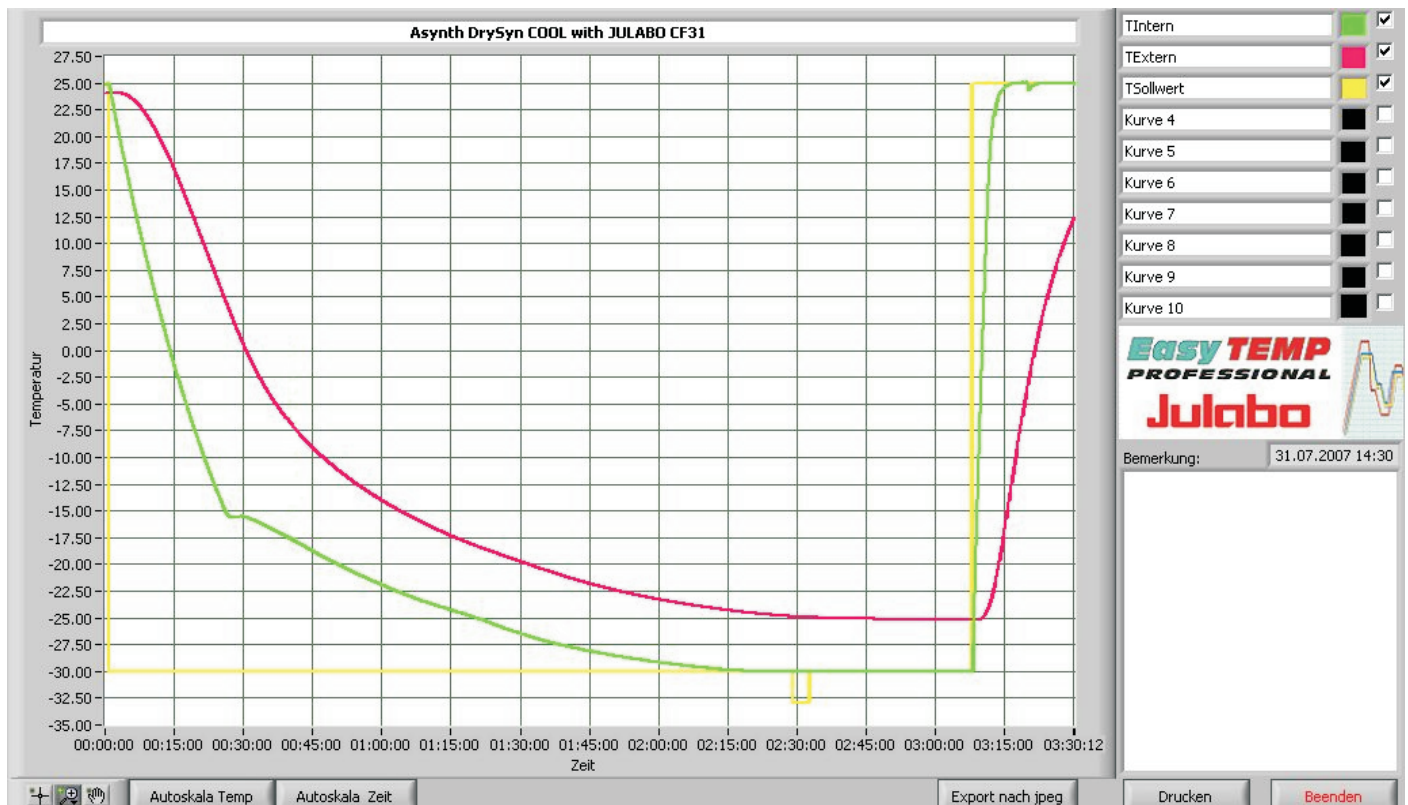
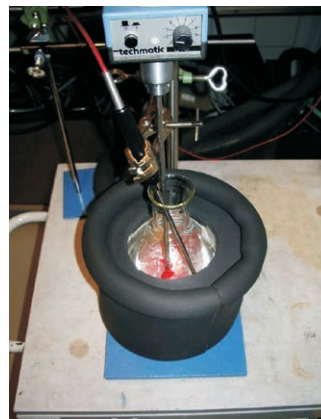
Case Study
03-2008
Page 2 from 7



Test 1

CF31 Asynth DrySyn COOL, insulated

Lowest temp. internally: achieved after::	-30 °C 2h 20min
Lowest temp. externally: achieved after:	-25.2 °C 2h 45min



Case Study

JULABO CF30, CF41, FL300

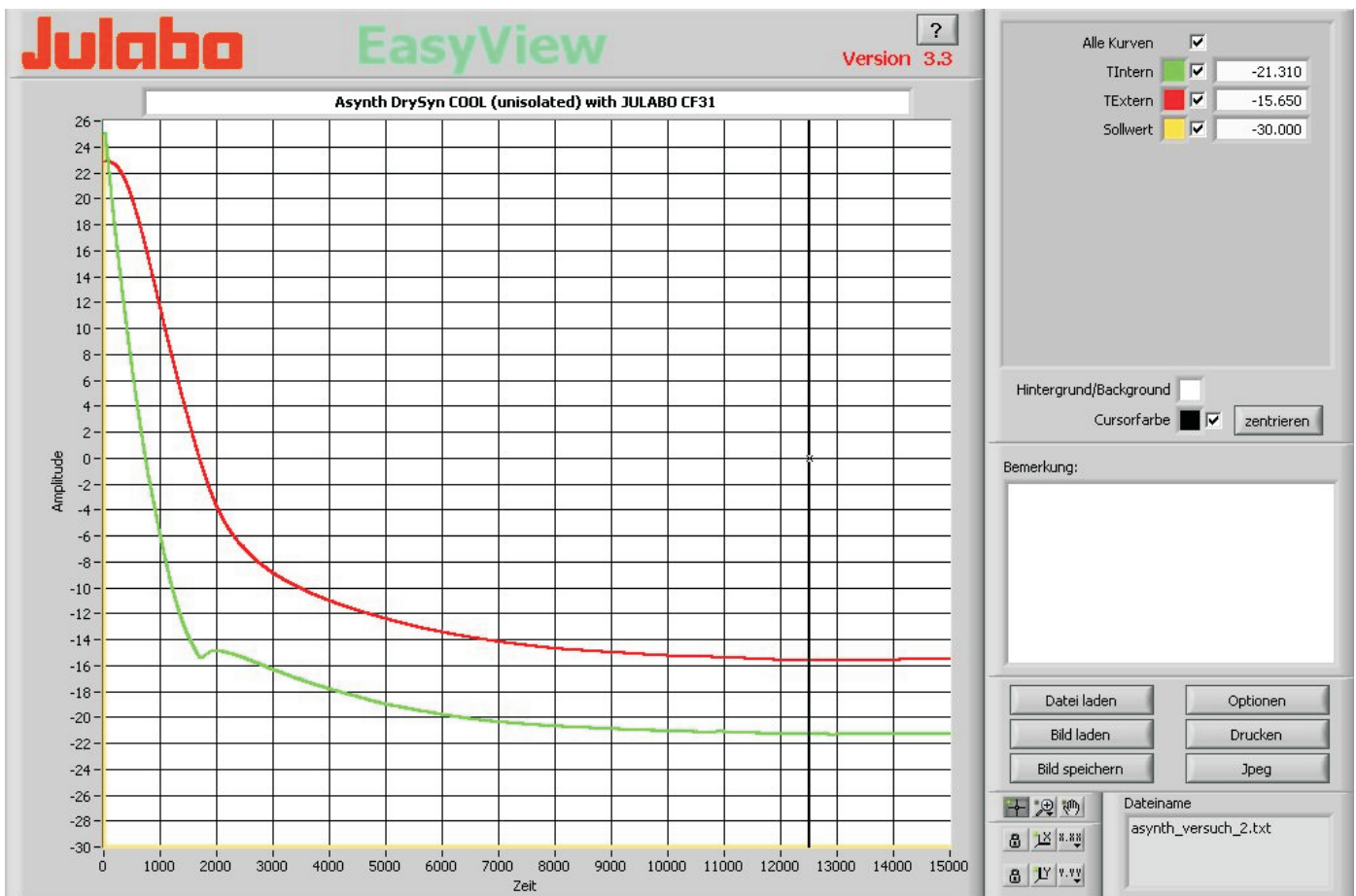
Case Study
03-2008
Page 3 from 7



Test 2

CF31 Asynth DrySyn COOL, not insulated

Lowest temp. internally: achieved after:	-30 °C Temperature not achieved, Lowest achieved temperature -21.0 °C after 2h 30min
Lowest temp. externally: achieved after:	-15.6 °C 3h 45min



Case Study

JULABO CF30, CF41, FL300

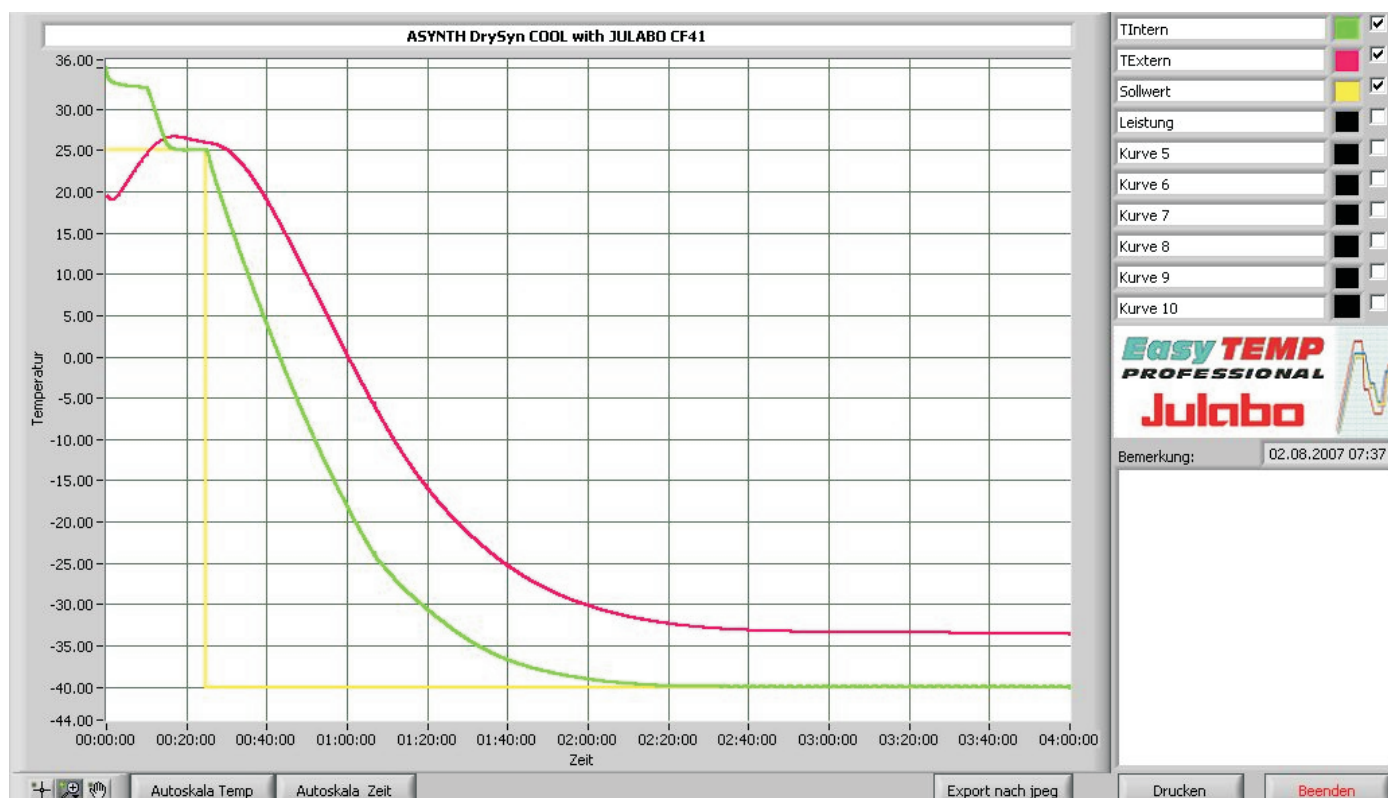
Case Study
03-2008
Page 4 from 7



Test 3

CF41 Asynt DrySyn COOL, insulated

Lowest temp. internally:	-40 °C
achieved after:	2h 20min
Lowest temp. externally:	-33.4 °C
achieved after:	3h 30min



Case Study

JULABO CF30, CF41, FL300

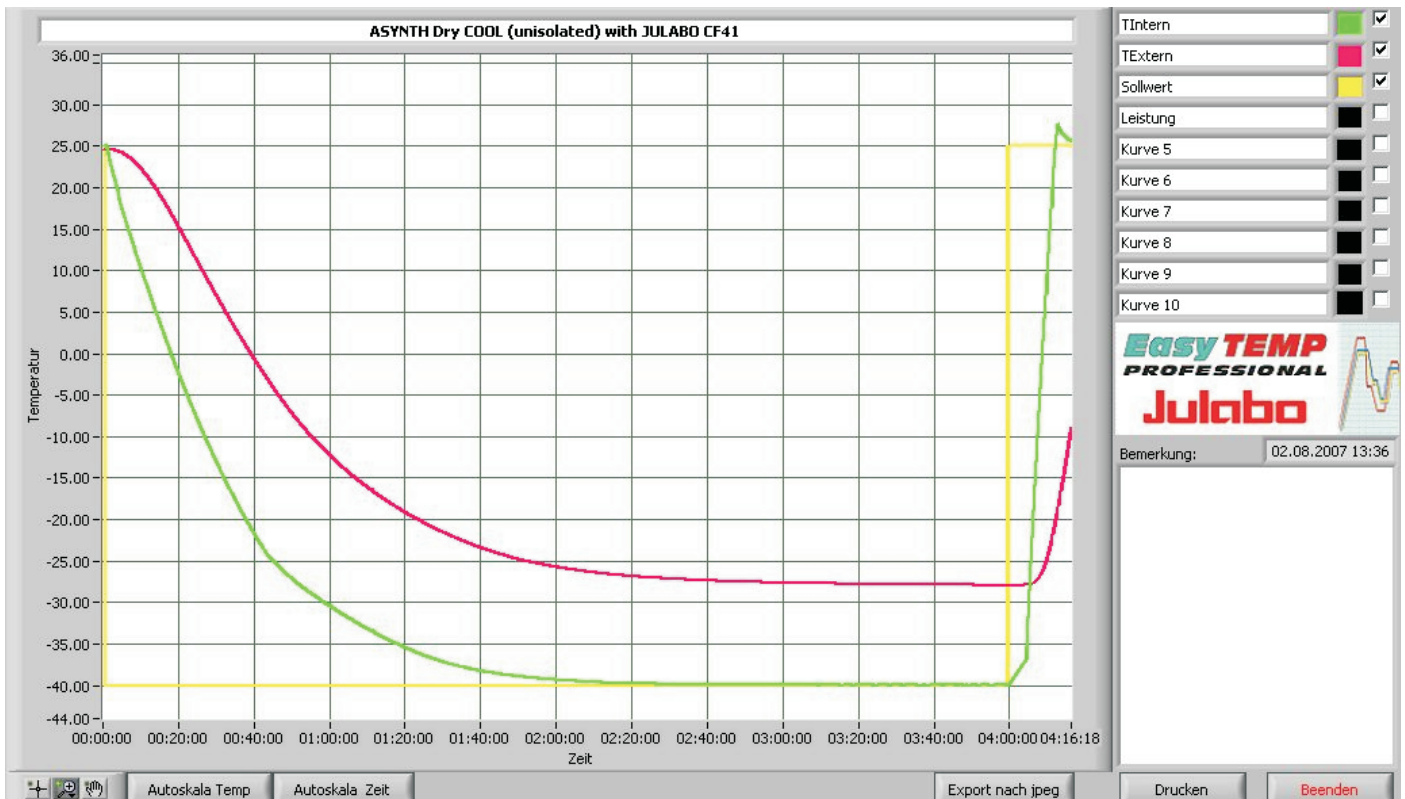
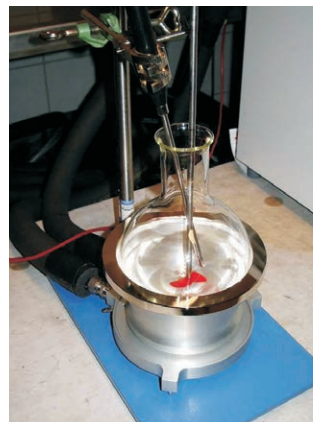
Case Study
03-2008
Page 5 from 7



Test 4

CF41 Asynt DrySyn COOL, not insulated

Lowest temp. internally: -40 °C
achieved after: 2h 40min
Lowest temp. externally: -27.9 °C
achieved after: 4h 00min



Case Study

JULABO CF30, CF41, FL300

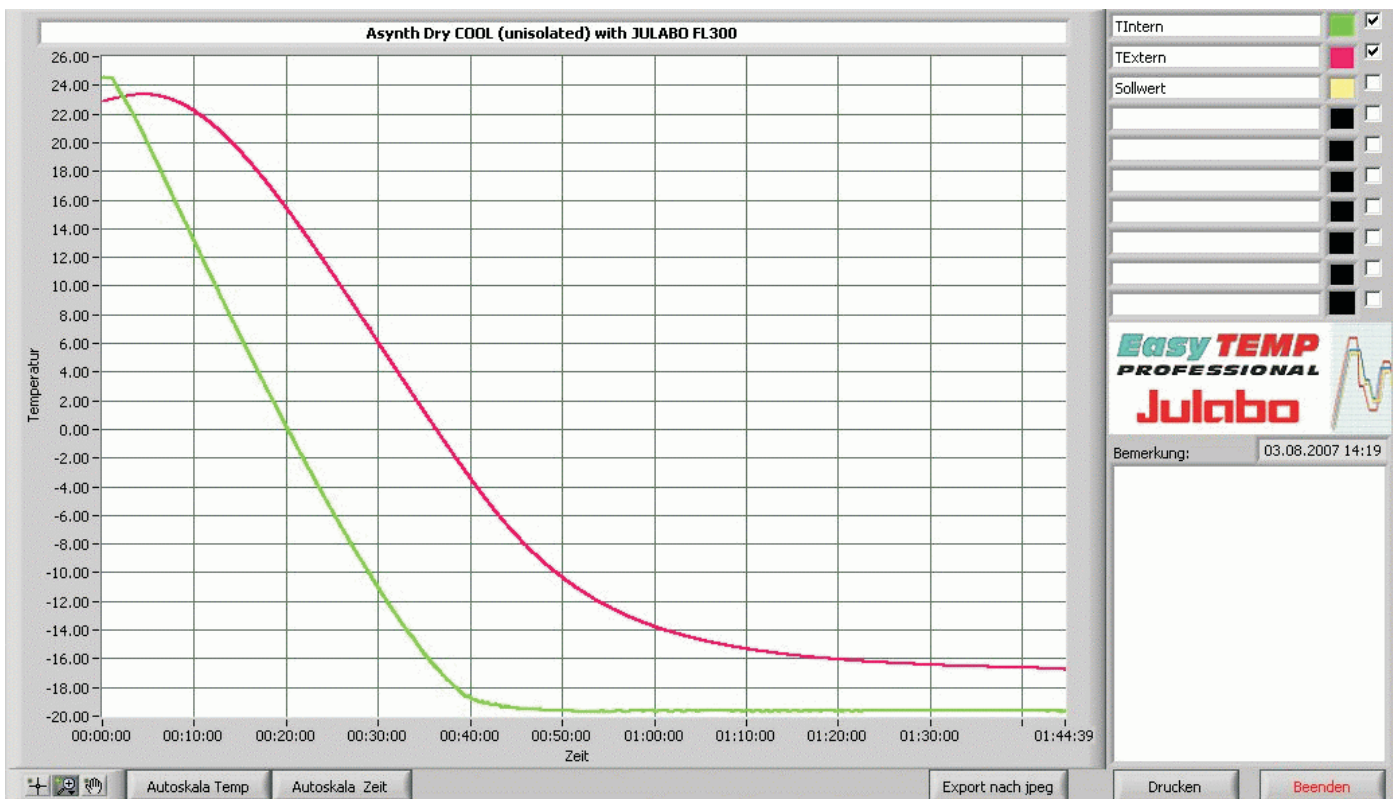
Case Study
03-2008
Page 6 from 7



Test 5

FL300 Asynth DrySyn COOL, insulated

Lowest temp. internally:	-20 °C
achieved after:	50min
Lowest temp. externally:	-16.8 °C
achieved after:	1h 45min



Case Study

JULABO CF30, CF41, FL300

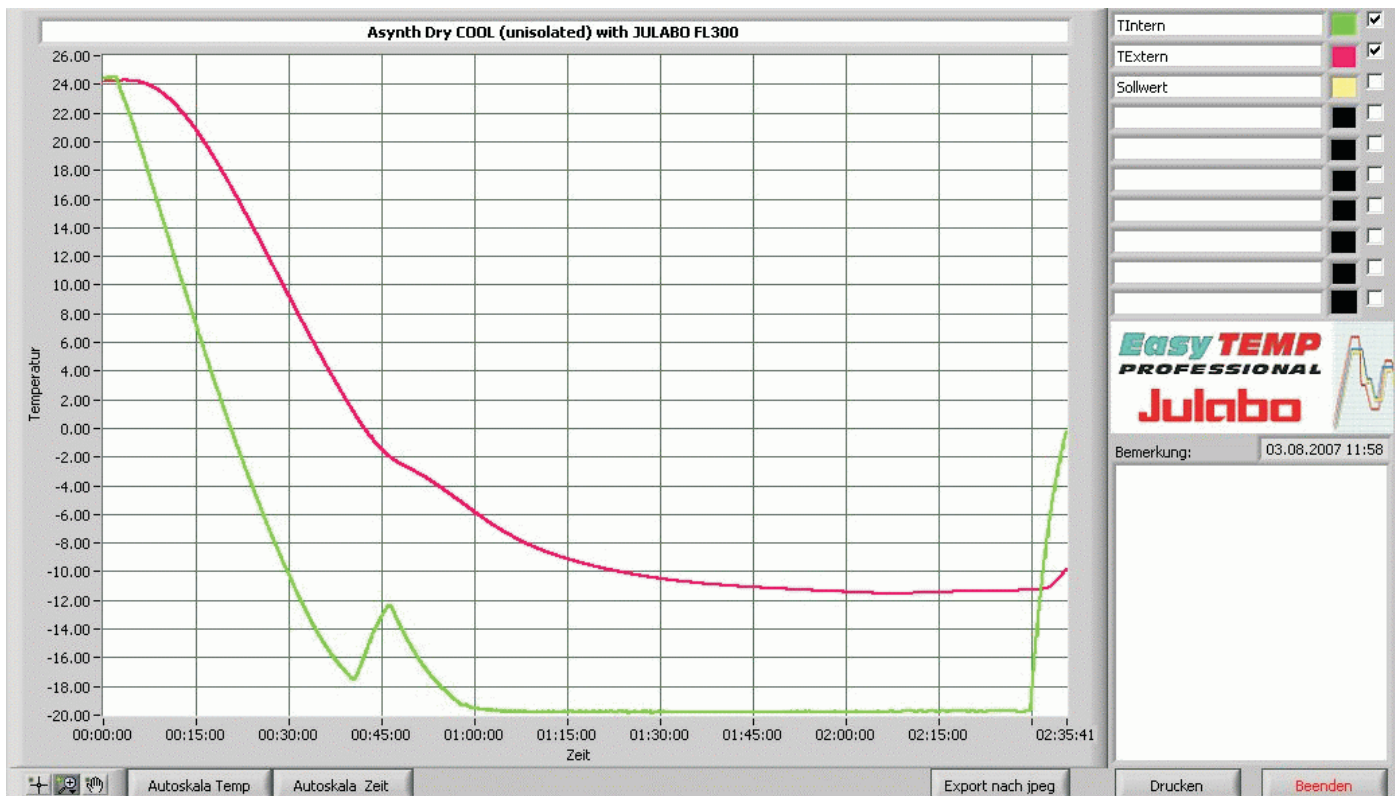
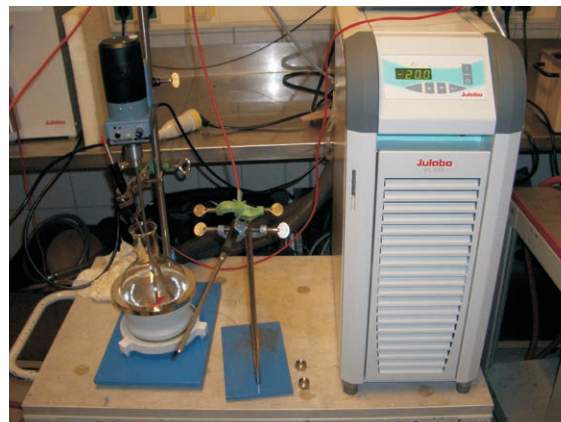
Case Study
03-2008
Page 7 from 7



Test 6

FL300 Asynth DrySyn COOL, not insulated

Lowest temp. internally:	-20 °C
achieved after:	1h 10min
Lowest temp. externally:	-11.3 °C
achieved after:	2h 10min



JULABO GmbH
Eisenbahnstraße 45 • 77960 Seelbach / Germany
Tel. +49 (0) 7823 51-0 • Fax +49 (0) 7823 24 91
info@julabo.de • www.julabo.de

Julabo
THE TEMPERATURE CONTROL COMPANY